



KUBER ENTERPRISES

TRADING, PROCESSING,
MANUFACTURING AND CONTRACTING

<https://kuberenterprises.info>

VISION

We lead in cables and renewable energy, partner globally, drive an India-first policy, invest in india's infrastructure and support nation building.

MISSION

We digitize operations, hire top managers, innovate practices, expand manufacturing, secure contracts, and achieve industry certifications.

VISION & MISSION

<https://kuberenterprises.info>

WHAT SETS US APART?



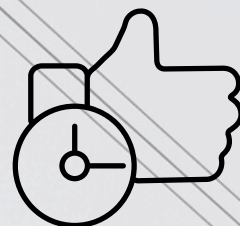
**35 YEARS +
INDUSTRY
EXPERIENCE**



**PAN INDIA
NETWORK**



**CUSTOMISED
SOLUTIONS**



**FIRST TIME
RIGHTS**



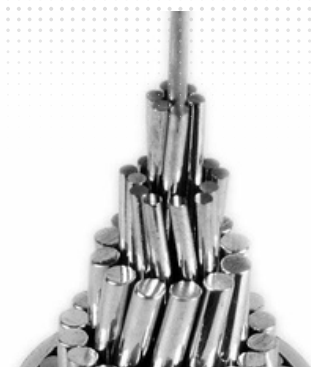
ACSR CONDUCTOR

ACSR cables transmit electricity with aluminium wires surrounding a steel core. They're durable and used in overhead power lines, resisting wind, rain, and temperature changes effectively for reliable energy transmission.



AAC CONDUCTOR

AAC (All Aluminum Conductor) cables are lightweight, made of aluminum, ideal for urban overhead power lines due to their moderate strength and conductivity, reducing strain on support structures.

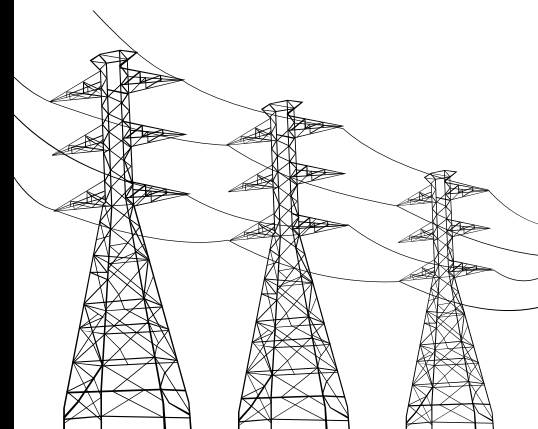


AAAC CONDUCTOR

AAAC cables, stronger and more conductive than AAC, are aluminum alloy conductors ideal for high-stress applications such as long-distance power transmission.

PRODUCTS WE DEAL IN

<https://kuberenterprises.info>



ALUMINIUM SCRAP

Aluminum scrap refers to discarded or recycled aluminum materials, such as cans, wires, pistons and sheets, that are collected and processed for reuse in various industries.



STAY WIRE

High-strength steel wire supporting poles and towers in overhead power transmission lines, providing additional stability and structural integrity, vital for ensuring the safety and reliability of the power grid



AERIAL BUNCHED CABLE

Multiple insulated conductors bundled together, ideal for overhead power distribution networks in urban and rural areas, reducing the risk of electrical accidents and offering enhanced safety and reliability compared to traditional bare conductors.



STEEL WIRE

Steel wire is a versatile material used in a wide range of applications, including construction, manufacturing, and electrical wiring, offers high tensile strength, durability, and resistance to corrosion, making it suitable for industrial and commercial use.



ALUMINIUM WIRE

Aluminum wire is a type of electrical conductor made from aluminum metal, used in electrical wiring due to its lightweight, high conductivity, and corrosion resistance, often preferred for overhead power transmission lines and distribution networks.

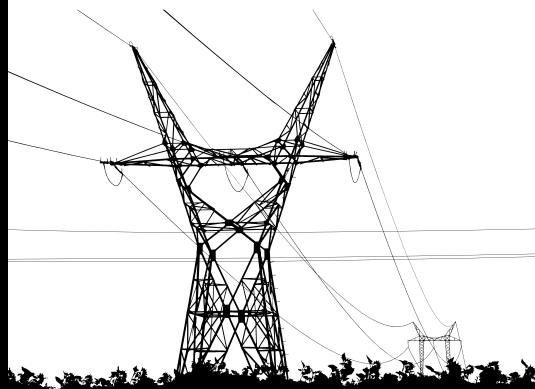


GALVANIZED IRON WIRE

Steel wire coated with zinc, resistant to corrosion and used in various applications including fencing, construction, and electrical wiring, ensuring durability and longevity in demanding environments.

PRODUCTS WE DEAL IN

<https://kuberenterprises.info>



PUNCHED TAPE CONCERTINA COIL

PTCC wire, or punched tape concertina coil, is a security fencing wire used for perimeter protection. It features sharp metal strips in a coil formation, creating a tough barrier. Commonly used in high-security areas, military installations, and borders for intrusion detection and prevention.



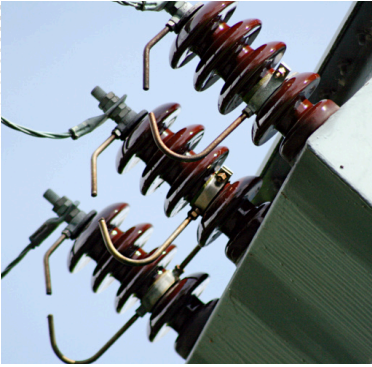
BARBED WIRE

Barbed wire, a vital component in perimeter security, was provided with exceptional quality and reliability. It effectively deterred unauthorized access to our premises, enhancing overall safety and security measures.



STAY SET

Structural components supporting poles or towers in overhead power transmission lines, providing stability and resistance against wind and environmental forces, crucial for maintaining the integrity of the power grid.



PORCELAIN INSULATOR

Insulating components made of ceramic materials, offering durability and reliability in overhead power lines, providing excellent insulation and support for electrical conductors, essential for maintaining the integrity of the power grid.



GLASS INSULATOR

Insulating components made of glass, providing high mechanical strength and resistance to electrical breakdown, commonly used in overhead power lines for reliable insulation and support in harsh environmental conditions.

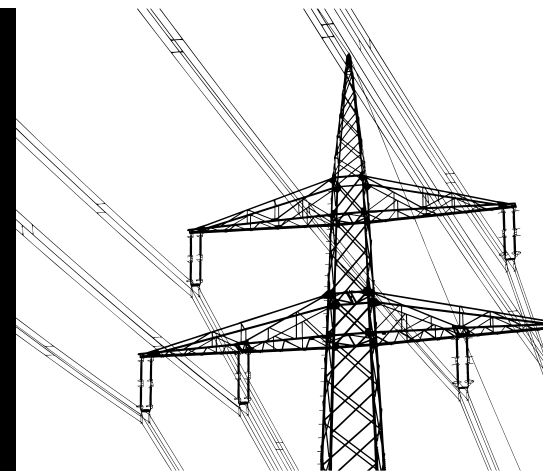


POLYMER INSULATOR

Insulating components made of polymer materials, lightweight and durable alternatives to traditional ceramic insulators, providing reliable insulation and support for overhead power lines in diverse environmental conditions.

PRODUCTS WE DEAL IN

<https://kuberenterprises.info>



EARTHING ROD

Metal rods in the ground dissipating electrical currents, safeguarding against faults and lightning strikes, essential for ensuring the safety and reliability of electrical systems.



JUMPER CABLE

Flexible electrical cable connecting two points in a circuit, used in substations or overhead power lines for temporary or permanent connections, essential for maintaining electrical continuity and reliability.

YOU CAN REACH:

SHARAD JAIN
Sole Proprietor

kubersharad@gmail.com
+91-9818550819

REACH US AT

<https://kuberenterprises.info>

YOU CAN REACH:

RAHUL JAIN
Business Development manager

business@kuberenterprises.info
+91-9971175089
+91-9971162789